



INSTRUCTION MANUAL



Automated Ramp

Model No.: 057H-600 Year: 2025





"Before starting activities, read the instructions for use"

Summary

1. Introduction.....	2
2. Security measures and user responsibilities.....	3
3. Operational care.....	4
4. Electro-Hydraulic Power Plant.....	4
5. Safety locks.....	5
6. Preventive maintenance.....	6
7. Warranty	7
8. Hydraulic Diagram	7
9. Loss of warranty	7

1. Introduction

The operator should always keep safety principles in mind first. Read the manual carefully.

Submit approved safety operations strictly in accordance with this manual.

We recommend that you read the manual carefully in order to guide the user with all the information pertinent to the use and operation of the equipment such as; structural, operation and operating conditions.

By following the basic operating instructions, the equipment will remain in perfect condition, extending the warranty and quality of the equipment.

It is important to keep the manual accessible to everyone who needs it. Maintenance must be carried out by qualified technicians.

Instruction manual



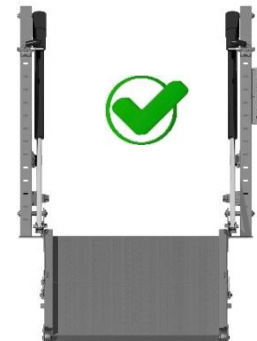
2. Security measures and user responsibilities

- a. Always ensure that the ramp is in good working order before starting operation.
- b. Before using the equipment, read the manual carefully, carrying out all operations correctly.
- c. Do not attempt to carry out repairs or repairs, if there is a need for maintenance, report immediately of any defect.
- d. When authorized to perform maintenance and/or repair services, ensure that it is being performed by a professional in the area.
- e. Report any problems that may arise in the area of operation that may pose a hazard or reduce safety.
- f. Never exceed the capacity of the ramp, take every precaution to ensure the safety of others and your own.
- g. Immediately discontinue the use of the equipment if anomalies are identified, presenting unsafe conditions for use.
- h. Do not use the ramp on uneven floors or steep slopes,

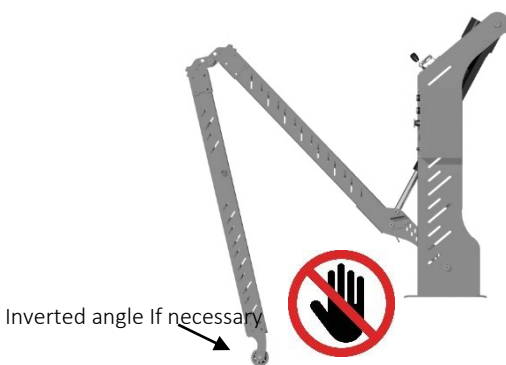
Local unevenness can damage the equipment and shorten its useful life.



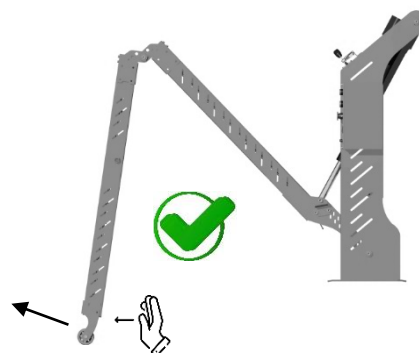
Incorrect Operation



Correct Operation



Incorrect Advance



Correct Advance

contato@fppengenharia.com.br

comercial@fppengenharia.com.br

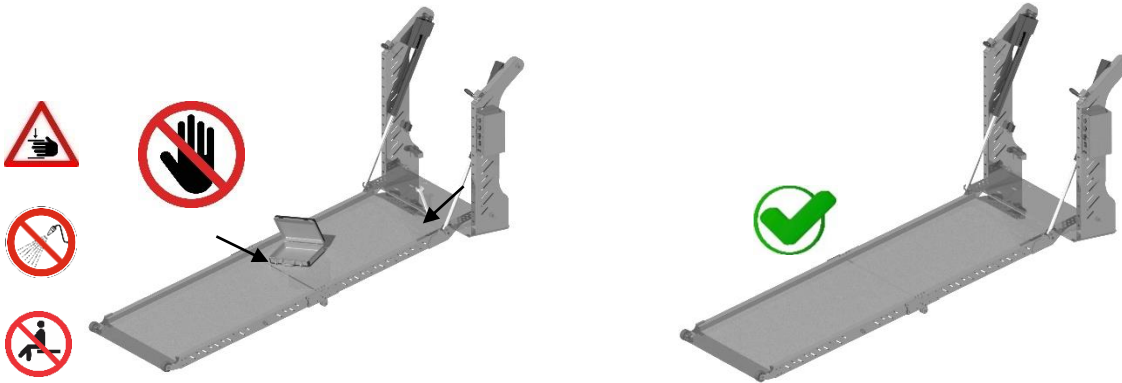
www.fppengenharia.com.br



3. Operational care

3.1. When handling the ramp, keep a safe distance, do not overlap tools and objects, or even lean on the floor.

Note. Never retract the ramp with accessories or even people on the ramp.



Incorrect use

Correct use

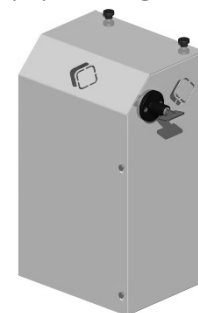
4. Electro-Hydraulic Power Plant

4.1. Central Hydraulic Panel with push button for activation, supply voltage in 12Vdc.

- Hanging pushbutton
- Up/Down

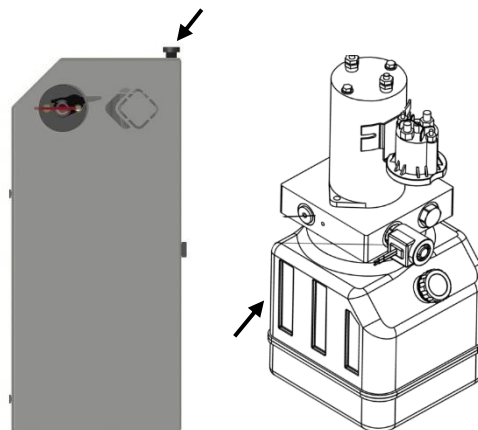


- Internal circuit breaker 250A
- Rotary head switch



4.2. Hydraulic reservoir with oil level indicator.

4.3. To access the inside of the panel, release two knobs on the top by lifting the cover until it disengages.



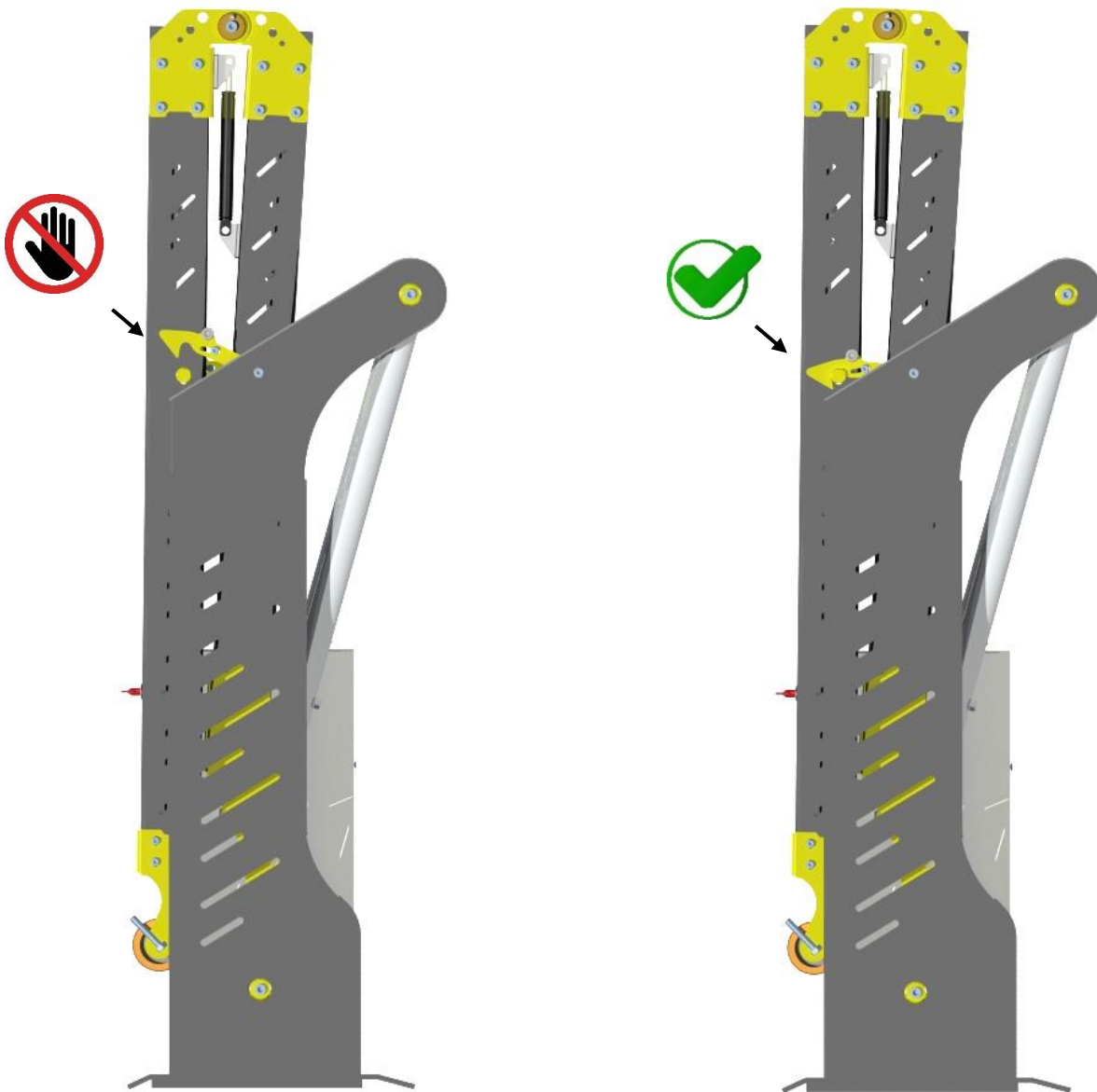
Instruction manual



5. Safety locks

5.1. Safety locks will be used after the ramp is fully retracted. This will lock the ramp to travel mode.

Note. Always lock both locks (right and left side).

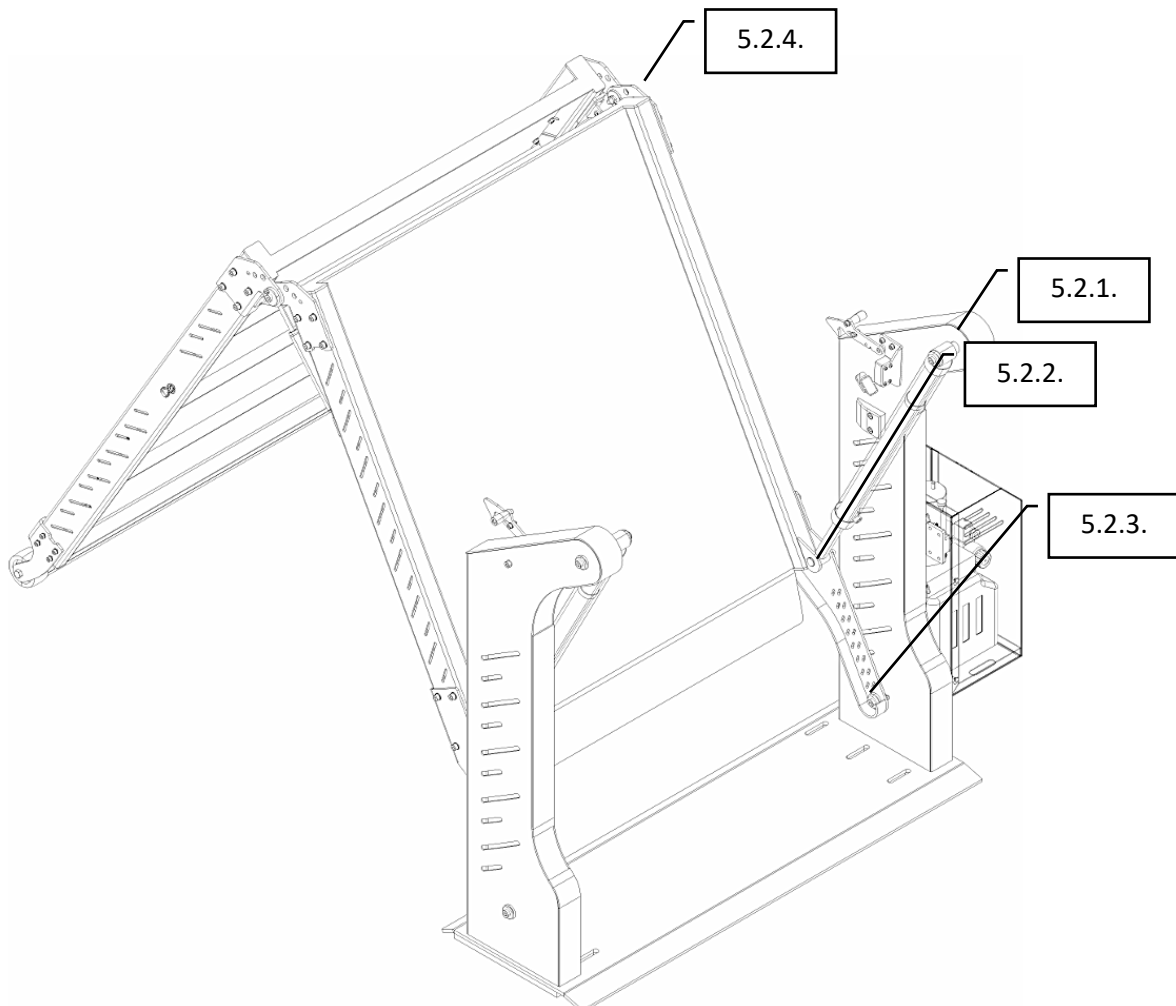


Instruction manual



6. Preventive maintenance

- 6.1. Preventive maintenance will be carried out as indicated below:
- 6.2. Lubrication of the moving parts as indicated in the chart below.
- 6.3. Grease for AC Chassis can be used at the indicated points.
- 6.4. Points of grease nozzles.
 - 6.4.1. Eyelet actuator cylindrical sleeve.
 - 6.4.2. Eyelet actuator cylindrical rod.
 - 6.4.3. Mancal principal.
 - 6.4.4. Central bearing between the two ramps.
- 6.5. Check or retighten the screws if necessary.



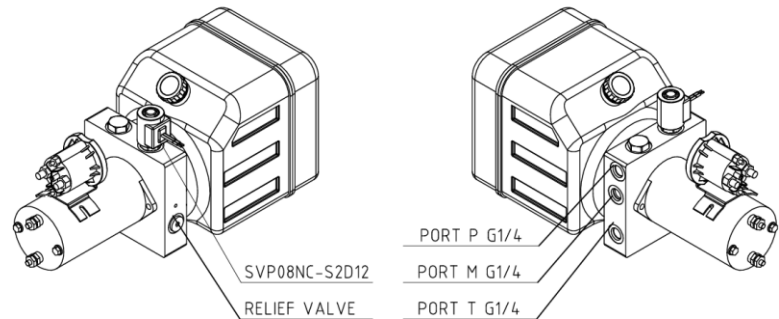
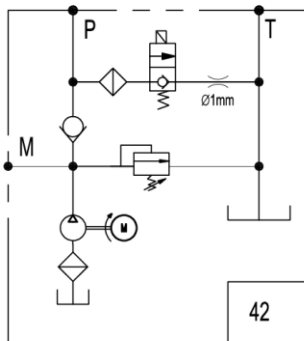


7. Warranty

- 7.1. This term aims to guarantee for a period of 6 months, from the date of issuance of the sales invoice.

8. Hydraulic Diagram

8.1. Hydraulic Diagram for checking.



9. Loss of warranty

- 9.1. Incompatible material: Incompatibility caused by products purchased from third parties and installed together with the products.
- 9.2. Improper maintenance and installation: Improper installation or maintenance performed by the operator if it is found that the equipment has been opened/altered by a non-specialized technician has its original electrical and/or safety circuit altered, or replacement of parts, repairs, adjustments made by unauthorized persons.
- 9.3. Improper handling: Negligence or malpractice in the use/improper handling of the equipment improper to the purposes for which it is intended or in disagreement with the product specification, such as the identification of objects that obstruct the ventilation of the equipment, being indispensable for the efficiency of most equipment.

"Have a great use"