



Instruction manual

Model No.: BP-072-BR



INTRODUCTION

The operator should always keep safety principles in mind by reading the manual carefully.

Submit approved safety operations strictly in accordance with this manual.

We recommend that you read the manual carefully in order to guide the user with all the information pertinent to the use and operation of the equipment, such as; operating conditions.

By following the basic operating instructions, the equipment will remain in perfect condition, extending the warranty and quality of the equipment.

It is important to keep the manual accessible to everyone who needs it. Maintenance must be carried out by qualified technicians.





Instruction manual

Model No.: BP-072-BR

Summary

1. PRESENTATION.....	2
2. RECOMMENDATIONS.....	2
3. SECURITY MEASURES	2
4. PRODUCT PRESENTATION.....	Erro! Indicador não definido.
5. PREVENTIVE MAINTENANCE AND CONSERVATION.....	3
6. WARRANTY.....	3
7. CONSIDERATIONS	4
8. LOSS OF WARRANTY	4
9. CONSIDERATIONS	4
10. TROUBLESHOOTING.....	5
11. FINAL PNEUMATIC SAFETY CHECKLIST	5

1. PRESENTATION

1.1. This manual is intended to inform about the correct way to use the equipment, seeking to avoid possible incidents or accidents, causing losses resulting from misuse or lack of knowledge. Read the manual before use.

2. RECOMMENDATIONS

2.1. We recommend reading this manual in order to instruct the user in all information related to the operation of the equipment as well as structure, installation, operation, operation and maintenance. In order for the user to handle safely and maintain the product warranty, all instructions in this manual must be followed. It is important to keep the manual accessible to everyone who needs it. Maintenance must be carried out by trained people.

3. SECURITY MEASURES

- 3.1. The Rules of Safe Handling
- 3.2. Sensor Support: When positioning flanged or insert sensors, hold them by the sides or top. Never place your fingers under the sensor base or between the adapter and the flange while lowering the part.
- 3.3. Positioning of the Clamps: When sliding the three clamps up the flange, make sure that your free hand is not resting on the contact area of the bolt.
- 3.4. Wrench Operation: Use wrenches of the correct length. Avoid the use of excessive force that may cause the tool to escape, resulting in finger impact against the edges of 304 Stainless Steel.

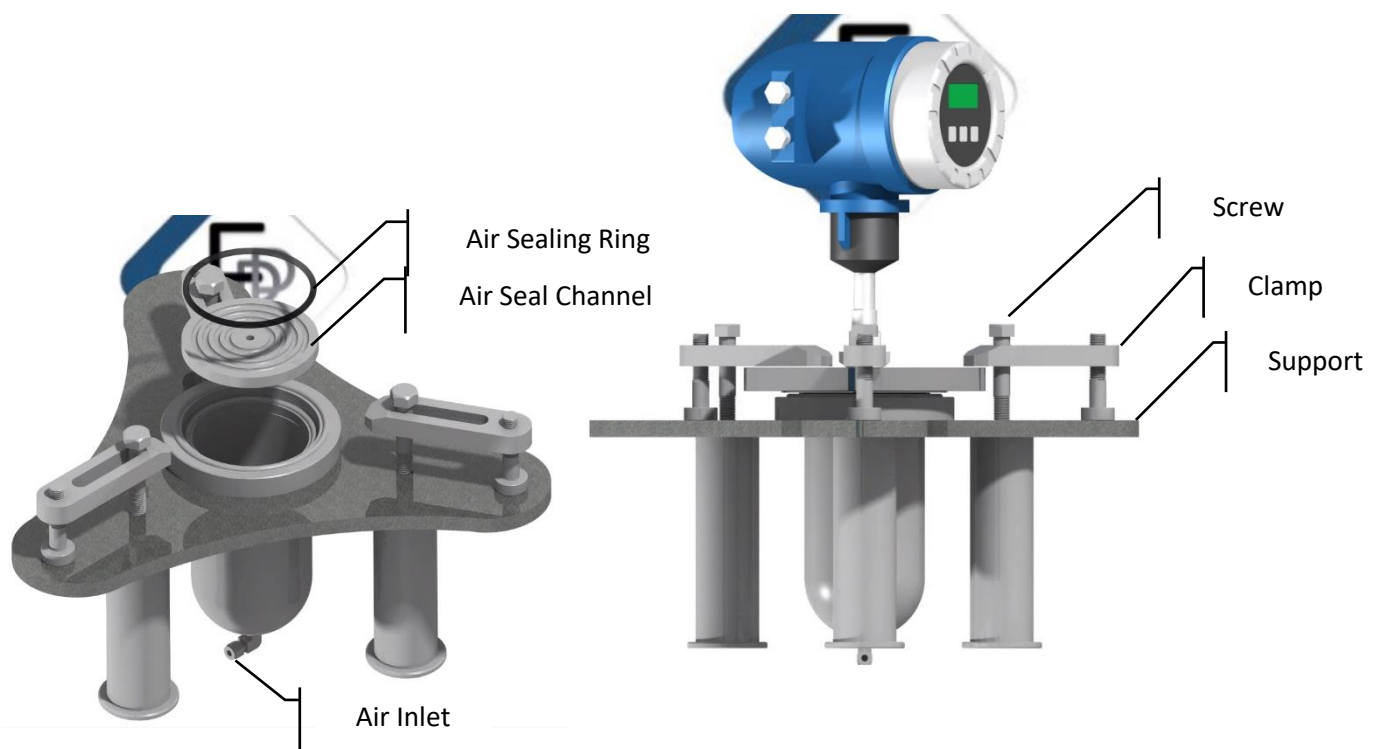




Instruction manual

Model No.: BP-072-BR

- 3.5. Use of PPE: Use protective gloves with good tactile sensitivity and mechanical resistance. Gloves help prevent cuts in the threads and reduce the impact in case of accidental small tightenings.
- 3.6. Identification of Risks on the Bench
- 3.7. Critical Point 1: Between the clamp screw and the top of the sensor.
- 3.8. Critical Point 2: Between the triangular base and the adapter during kit changes.
- 3.9. Critical Point 3: Hexagonal screw threads (risk of cutting or abrasion).
- 3.10. Golden Tip: "One hand on the sensor, the other on the tool". Never attempt to adjust the position of the rubber ring with your fingers while you are initiating clamping of the clamps.



4. PREVENTIVE MAINTENANCE AND CONSERVATION

- 4.1. Preventive maintenance of the equipment must be done by a qualified person.

5. WARRANTY

This term aims to guarantee for a period of 6 months from the date of issuance of the invoice.





Instruction manual

Model No.: BP-072-BR

6. CONSIDERATIONS

- 6.1. Manufacturing defect: If the quality of the product against manufacturing defects may affect its operation during this period, all parts and components that present proven design and/or manufacturing defects will be submitted at no cost to the customer.
- 6.2. For maintenance under warranty, it will be necessary to send the equipment to the address of the company FPP Engenharia.
- 6.3. Application of Warranty: The warranty applies only to new products, and does not apply to any components that have been modified.

7. LOSS OF WARRANTY

- 7.1. Incompatible material: Incompatibility caused by products purchased from third parties and installed together with the products.
- 7.2. Improper use; found that the equipment was altered, parts were replaced by unqualified people.
- 7.3. Improper handling: Negligence or malpractice in the use/improper handling of the equipment improper to the purposes for which it is intended or in disagreement with the product specification.

8. CONSIDERATIONS

- 8.1. Warranty Term: The warranty of said term is conditioned to the correct handling and transportation of the product and the agreement with the conditions described below.
The product should not be handled abruptly.
- 8.2. Adjustments are the responsibility of the customer and are not covered by the warranty.
FPP Engenharia is not responsible for any accident that occurs as a result of the improper use of the equipment, or lack of maintenance of the same.
- 8.3. Factory defect: If the product is defective, immediately contact FPP Engenharia.





Instruction manual

Model No.: BP-072-BR

9. TROUBLESHOOTING

- 9.1. As the system uses **compressed air**, fault detection is facilitated by the characteristic exhaust noise. Use the table below to diagnose and fix common issues:
- 9.2. Here is the **Troubleshooting section** focused on pneumatic systems and air leaks, completing its technical manual:

Problem	Probable Cause	Corrective Action
Audible leak at the base	Rubber O-ring dried out or with debris.	Clean the adapter channel and ring; replace if there are cuts.
Pressure does not stabilize	Microleakage at the insertion sensor interface.	Check that the rubber ring is properly compressing the sensor body.
Sensor "wobbling"	Uneven tightening of the three clamping clips.	Depressurize and retighten the screws in triangular sequence to level.
Side Air Leakage (Flange)	Flanged sensor misaligned with the adapter.	Center the sensor and ensure that the flange fully covers the O-ring.
Difficulty in insertion	Lack of lubrication or swollen rubber ring.	Clean the ring with rubbing alcohol or use a drop of silicone spray.
Instability in reading	Compressed air with too much humidity or thermal oscillation.	Make sure the air line filter is clean and wait for thermal stabilization.

10. FINAL PNEUMATIC SAFETY CHECKLIST

10.1. Before opening the air valve, confirm:

- 10.1.1. Integrity: Are the 304 Stainless Steel adapters free of cracks or deformations?
- 10.1.2. Fastening: Have the screws of the clamps been tightened with a hand tool to the sealing limit?
- 10.1.3. Environment: Is there no one positioned directly above the sensor during the initial pressurization?
- 10.1.4. Depressurization: In the end, was the air relief done gradually so as not to "jerk" the rubber rings?

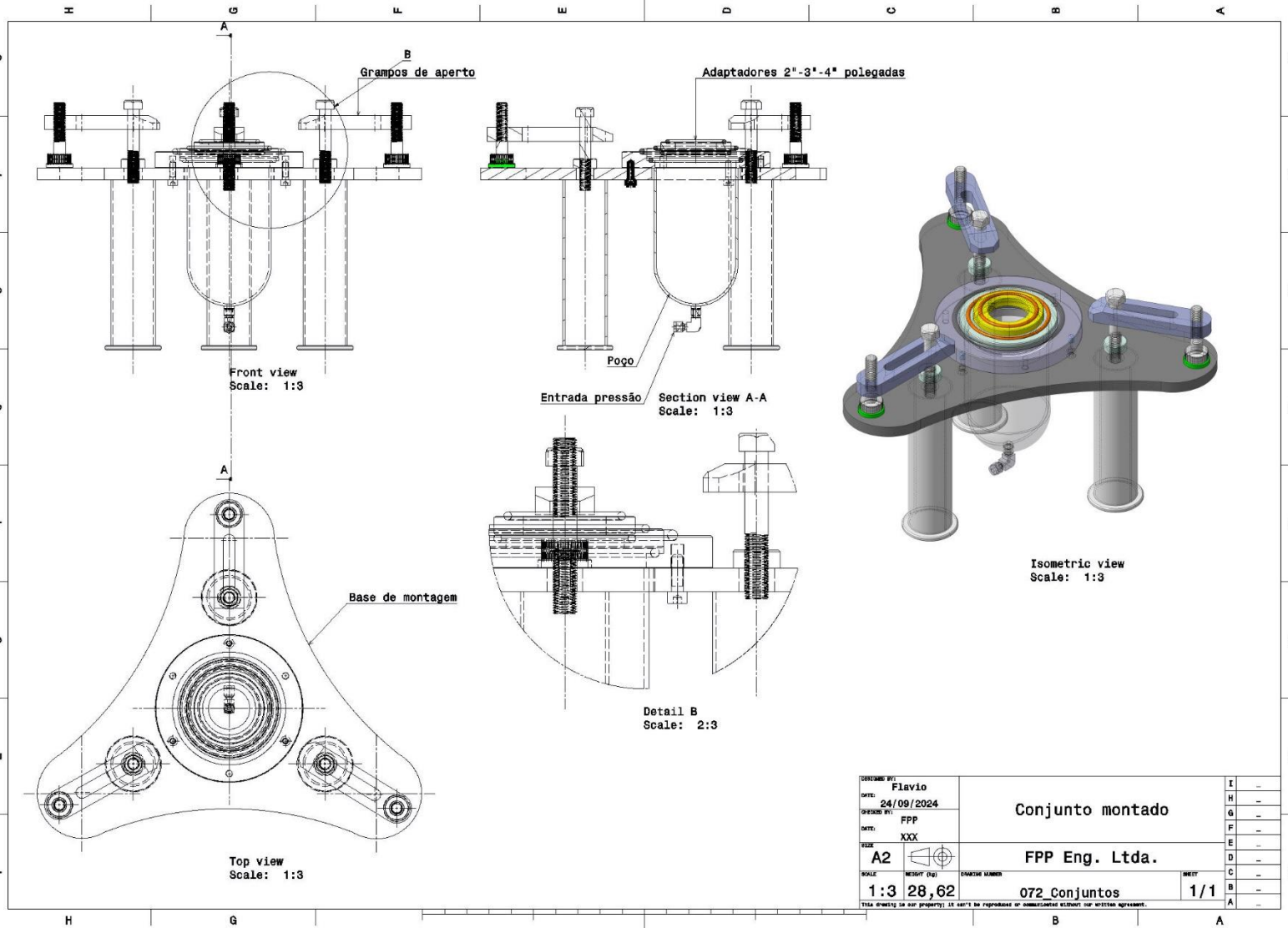




Instruction manual

Model No.: BP-072-BR

11. Mechanical drawing



DESIGNADO BY:	Flavio	I	-
DATE:	24/09/2024	H	-
CHECKED BY:	FPP	G	-
DATE:	XXX	F	-
REVIS		E	-
SIZE	A2	D	-
SCALE	1:3	C	-
WEIGHT (kg)	28,62	B	-
EMISSOR	FPP Eng. Ltda.	A	-
EMISSOR NUMBER	072 Conjuntos		
SHEET	1/1		

This drawing is our property. It can't be reproduced or disseminated without our written agreement.

