



---

## *INSTRUCTION MANUAL*

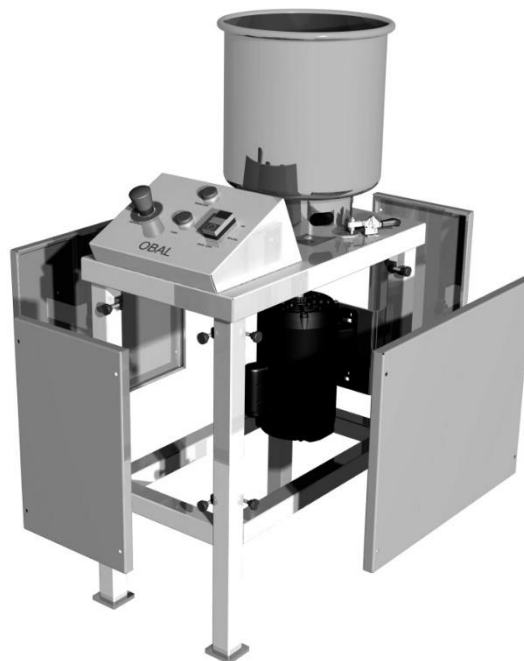
---



### INTRODUCTION

The operator should always keep safety principles in mind by reading the manual carefully.

Submit approved safety operations strictly in accordance with this manual.



We recommend that you read the manual carefully in order to guide the user with all the information pertinent to the use and operation of the equipment, such as; operating conditions.

By following the basic operating instructions, the equipment will remain in perfect condition, extending the warranty and quality of the equipment.

[contato@fppengenharia.com.br](mailto:contato@fppengenharia.com.br)

[comercial@fppengenharia.com.br](mailto:comercial@fppengenharia.com.br)

[www.fppengenharia.com.br](http://www.fppengenharia.com.br)

# Instruction manual



It is important to keep the manual accessible to everyone who needs it. Maintenance must be carried out by qualified technicians.

## Summary

|   |   |
|---|---|
| 1. PRESENTATION.....                            | 3 |
| 2. RECOMMENDATIONS.....                         | 3 |
| 3. SECURITY MEASURES.....                       | 3 |
| 4. PRODUCT PRESENTATION.....                    | 3 |
| 5. DIMENSIONS.....                              | 4 |
| 6. ELECTRICAL CONNECTION.....                   | 5 |
| 7. OPERATION.....                               | 5 |
| 8. PREVENTIVE MAINTENANCE AND CONSERVATION..... | 5 |
| 9. WARRANTY.....                                | 6 |
| 10. CONSIDERATIONS.....                         | 6 |
| 11. LOSS OF WARRANTY.....                       | 6 |
| 12. CONSIDERATIONS.....                         | 6 |
| 13. ELECTRICAL DIAGRAM.....                     | 7 |



## 1. PRESENTATION

- 1.1. This manual is intended to inform about the correct way to use the equipment, seeking to avoid possible incidents or accidents, causing losses resulting from misuse or lack of knowledge. Read the manual before use.

## 2. RECOMMENDATIONS

- 2.1. We recommend reading this manual in order to instruct the user in all information related to the operation of the equipment as well as structure, installation, operation, operation and maintenance. In order for the user to handle safely and maintain the product warranty, all instructions in this manual must be followed. It is important to keep the manual accessible to everyone who needs it. Maintenance must be carried out by trained people.

## 3. SECURITY MEASURES

- 3.1. Before using the equipment, read the manual carefully and perform all operations correctly.  
Before turning on, check that the equipment is correctly connected to the mains to avoid any problem with the equipment.
- 3.2. Never remove the "lid/container" while the equipment is running.



## 4. PRODUCT PRESENTATION

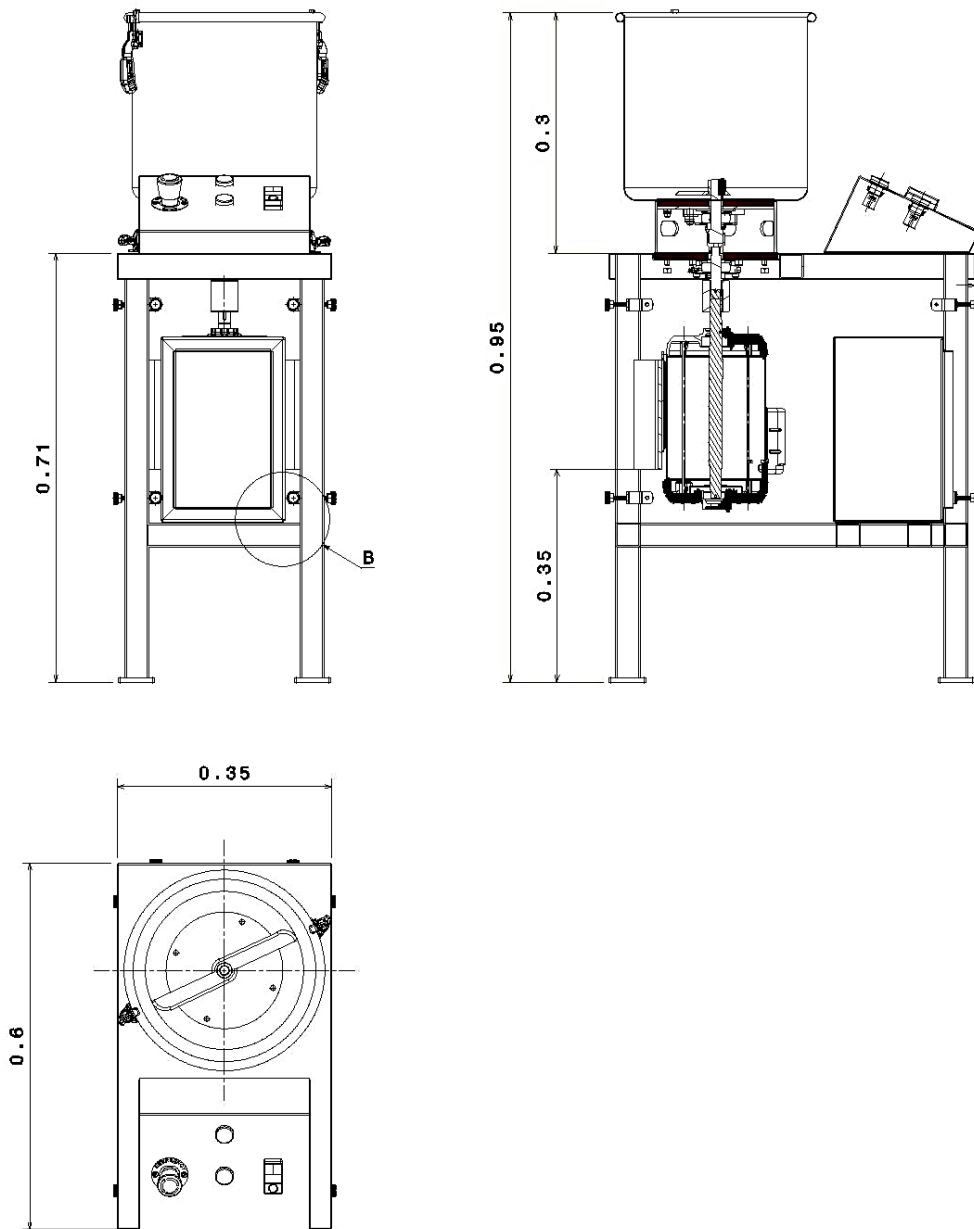
- 4.1. The bone homogenizer was developed to meet the market, offering a great product.
- 4.2. Thinking about bringing more agility and versatility to the operator who will prepare for use, OBAL thought about practicality, developing a smaller and lighter equipment, the homogenizer model HO-750A elaborated with total safety and practicality.
- 4.3. Internal volume of the container 16 liters.
- 4.4. Processing load 2 kg.  
Note. Do not exceed the capacity of the shredder.
- 4.5. Approximate weight; 40 kg.

# Instruction manual



## 5. DIMENSIONS

### 5.1. Views: Front – Side – Top.



# Instruction manual



## 6. ELECTRICAL CONNECTION

- 6.1. Before connecting to an ELECTRICAL NETWORK, make sure that it can handle the power of the equipment. Check correct supply voltage to avoid a breakdown in electrical components.
- 6.2. Grounding; Always use grounding to avoid any type of discharge in the equipment, or a possible accident in operation.
- 6.3. The installation and connection operation should be done by a qualified technician.
- 6.4. Operating voltage; 220 volts.

## 7. OPERATION

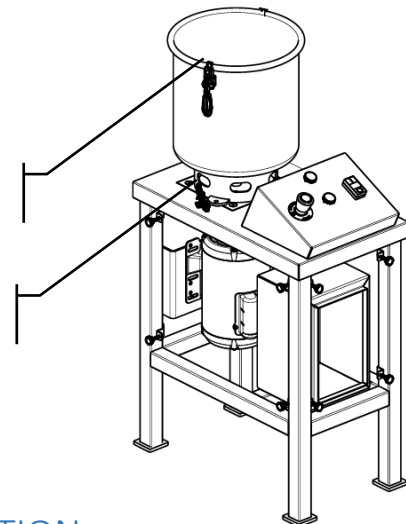
### 7.1. Panel Bonding and Operation:

Powering the panel; Before turning on the equipment, make sure that the safety locks are in the correct position.



Safety lock

Safety lock



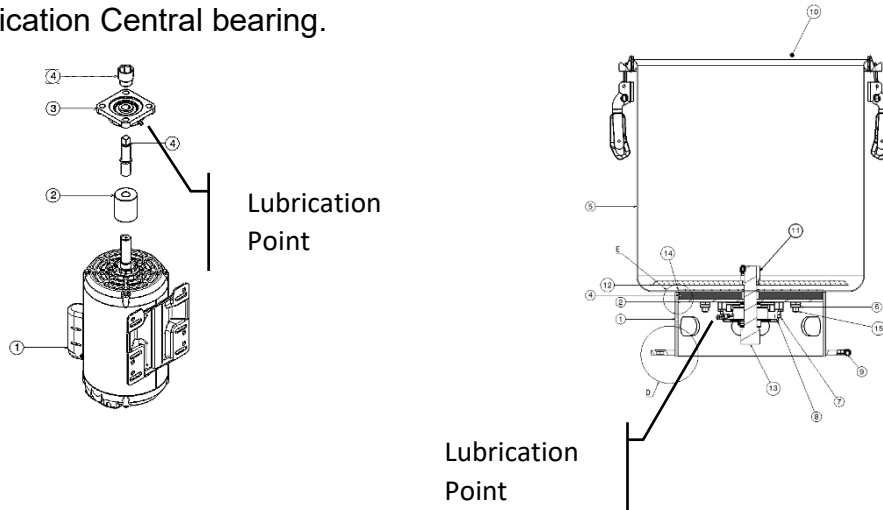
## 8. PREVENTIVE MAINTENANCE AND CONSERVATION

- 8.1. Preventive Maintenance: Preventive maintenance of equipment must be done by a qualified person.  
Before any maintenance, make sure it is turned off or de-energized.  
In case of electrical problems, contact a professional in the area.
- 8.2. Engine: Low maintenance, periodic inspections by the operator are recommended such as; increased noise, vibration or low yield.
- 8.3. Electrical panel: Low maintenance, just make sure the components are fully fixed, attached to the bottom of the panel.
  - 8.3.1. Ideally, it should be inspected at an interval of six months.

# Instruction manual



## 8.4. Lubrication Central bearing.



- 8.4.1. Ideally, it should be lubricated at an interval of six months.
- 8.4.2. Note. After lubrication, remove excess grease from the bearing.

## 9. WARRANTY

This term aims to guarantee for a period of 6 months from the date of issuance of the invoice.

## 10. CONSIDERATIONS

- 10.1. Manufacturing defect: If the quality of the product against manufacturing defects may affect its operation during this period, all parts and components that present proven design and/or manufacturing defects will be submitted at no cost to the customer.
- 10.2. For maintenance under warranty, it will be necessary to send the equipment to the address of the OBAL company.
- 10.3. Application of Warranty: The warranty applies only to new products, and does not apply to any components that have been modified.

## 11. LOSS OF WARRANTY

- 11.1. Incompatible material: Incompatibility caused by products purchased from third parties and installed together with the products.
- 11.2. Power supply: The product is connected to the mains outside the specified standards.
- 11.3. Improper use; found that the equipment was altered, parts were replaced by unqualified people.
- 11.4. Improper handling: Negligence or malpractice in the use/improper handling of the equipment improper to the purposes for which it is intended or in disagreement with the specification of the product being processed.

## 12. CONSIDERATIONS

- 12.1. Warranty Term: The warranty of said term is conditioned to the correct handling and transportation of the product and the agreement with the conditions described below.  
The product should not be handled abruptly.
- 12.2. Periodic and/or preventive maintenance: Adjustments are the responsibility of the customer and are not covered by the warranty.  
OBAL is not responsible for any accident that occurs as a result of the improper use of the equipment, or lack of maintenance of the same.

contato@fppengenharia.com.br

comercial@fppengenharia.com.br

[www.fppengenharia.com.br](http://www.fppengenharia.com.br)

# Instruction manual



12.3. Factory defect: If the product is defective, immediately contact OBAL.

## 13. ELECTRICAL DIAGRAM

### 13.1. Link.

8,5

